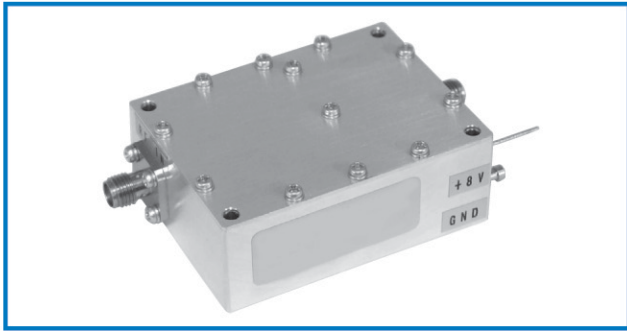


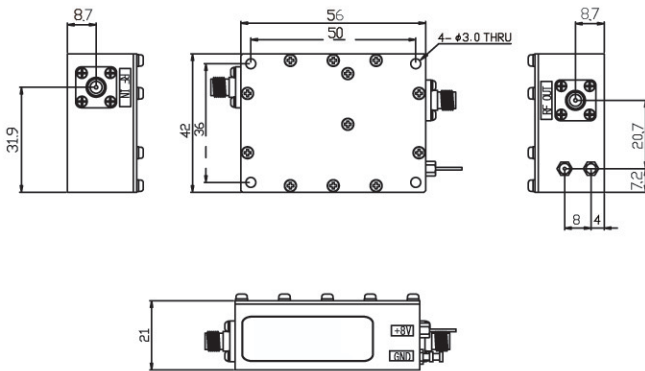
LOW POWER AMPLIFIER

HD29970



OUTLINE DRAWING

※IN MILLIMETERS



- Broadband Frequency : 300~4000MHz
- Output Power : +22dBm (typ)
- Gain Flatness : ±2.0dB (max.)

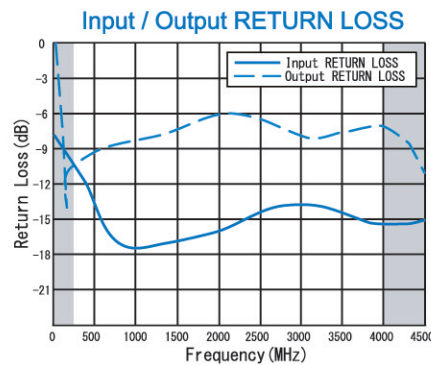
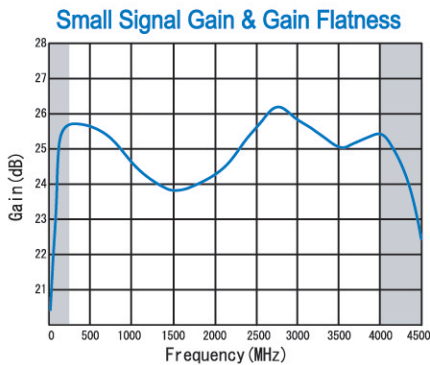
SPECIFICATIONS

Frequency Range	: 300 – 4000MHz
Small Signal Gain	: +25dB (typ.) : +22dB (min.)
Gain Flatness	: ±2.0dB (max.)
Input Return Loss	: – 10dB(max.)
Output Return Loss	: – 4.5dB(max.)
Output Power @1dB Comp.	: +22dBm (typ.) @2GHz : +21dBm (min.)
@sat.	: +23dBm (typ.)
DC Supply Input	: +8V / 0.3A(max.)
Maximum RF Input Power	: – 1dBm
Operating Temperature	: – 10°C to +45°C
Storage Temperature	: – 15°C to +65°C
Connectors	: SMA-FEMALE
Weight	: 80g (3oz) (typ.)

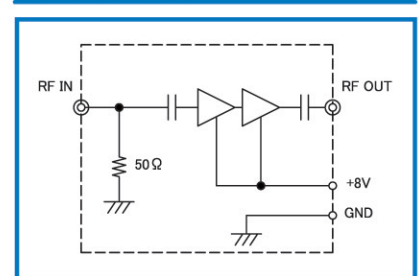
HOW TO ORDER

Model Name
HD29970

TYPICAL PERFORMANCE (Temp @+25°C)



SCHEMATIC



Output Power Linearity

